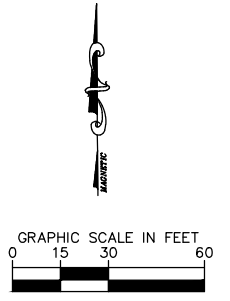
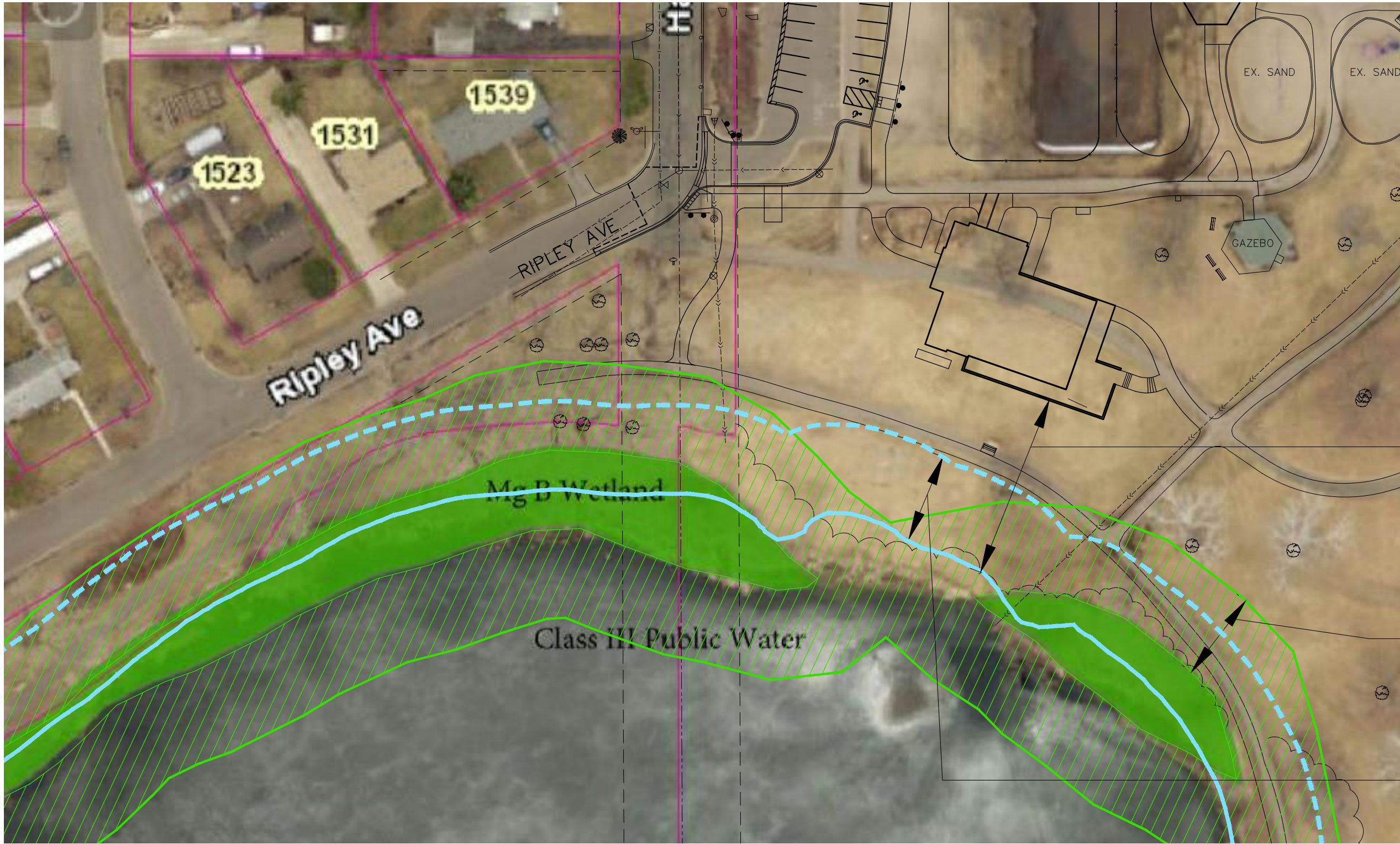


K:\TWC_Civil\CITY MAPLEWOOD\WAKFIELD PARK_FINAL DESIGN\CAD\Plan_Sheets\Exhibits\Wetland Impacts Exhibit for CDRB App.dwg January 25, 2018 - 3:11pm



~104' FROM
ORDINARY
HIGH WATER
MARK

50' MANAGE
B WETLAND
BUFFER

50' MINIMUM
SETBACK
FROM
ORDINARY
HIGH WATER
MARK

No.	Date	Revisions	App.

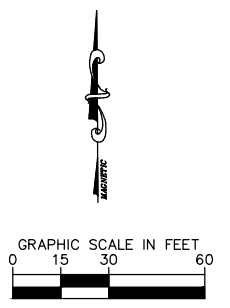
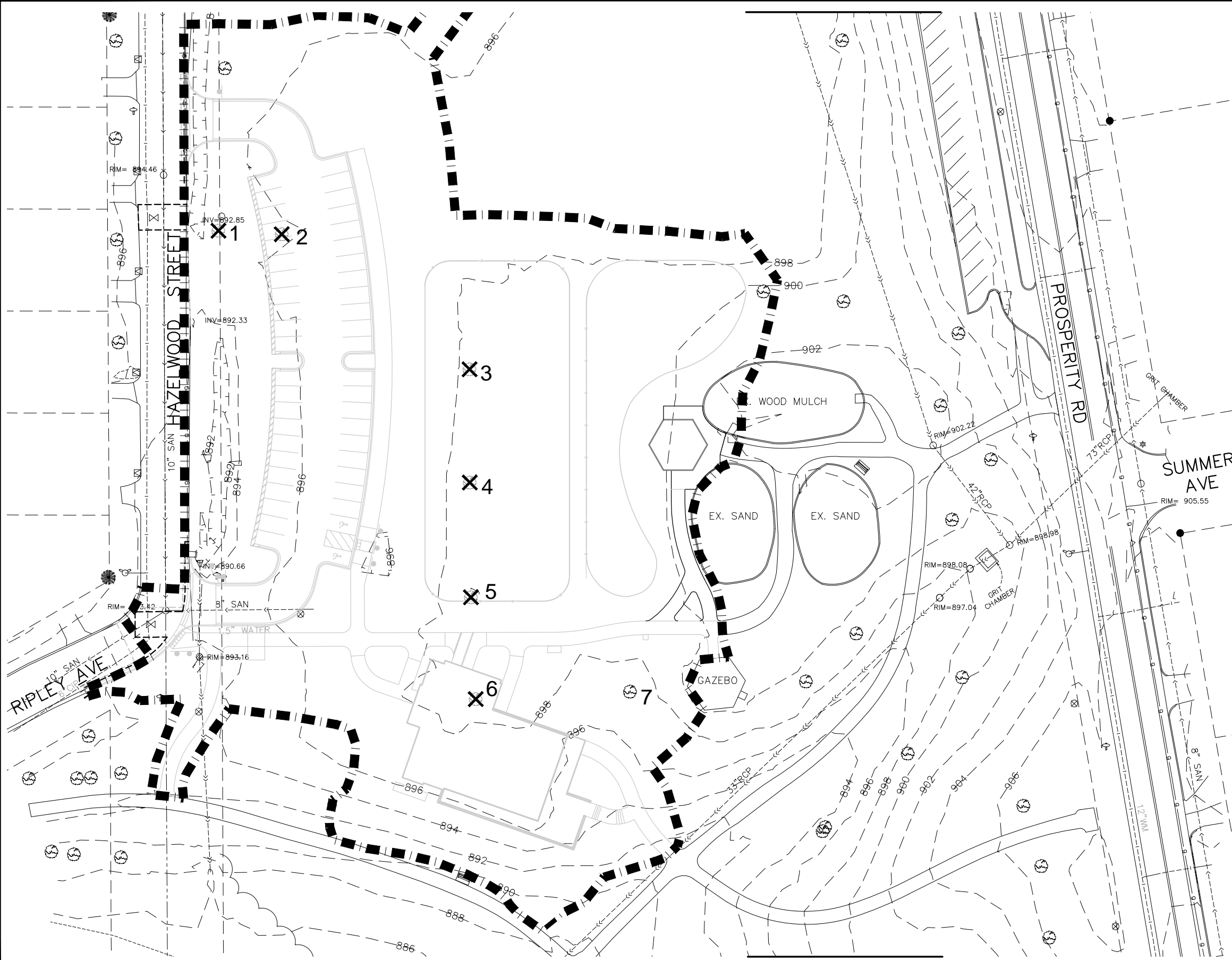
Kimley»Horn
2550 UNIVERSITY AVENUE WEST, SUITE 239N
SAINT PAUL, MINNESOTA 55114
Ph: 651-645-4197 www.kimley-horn.com

HAGEN, CHRISTENSEN & MOILWAIN
ARCHITECTS



CITY OF MAPLEWOOD
WAKEFIELD PARK IMPROVEMENTS
CITY PROJ. # PR17-01
WETLAND IMPACTS EXHIBIT

K:\TWC_Civil\Civil\Maplewood\Wakfield Park Final Design\CAD\Plan Sheets\Exhibits\Tree Removals.dwg January 25, 2018 - 3:50pm



LEGEND

- — — — — LIMITS OF CONSTRUCTION
- ⊗ EXISTING TREE TO BE REMOVED
- ⊙ EXISTING TREE TO REMAIN
- ⊗ # TREE ID, SEE TABLE THIS SHEET

TREE TABLE

TREE ID	TYPE	DIAMETER (IN INCHES)	SPECIES	HEALTH
1	SPECIMEN	30	SILVER MAPLE	AVERAGE
2	SIGNIFICANT	25	AMERICAN LINDEN	GOOD
3	SIGNIFICANT	18.5	GREEN ASH*	AVERAGE
4	SIGNIFICANT	22	GREEN ASH*	AVERAGE
5	SIGNIFICANT	24	GREEN ASH*	AVERAGE
6	SIGNIFICANT	23	GREEN ASH*	AVERAGE
7	SPECIMEN	29	GREEN ASH*	AVERAGE

*GREEN ASH ARE LISTED HERE AS SIGNIFICANT TREES, HOWEVER THIS CLASSIFICATION SHOULD BE REVIEWED BY CITY STAFF DUE TO THE EMERALD ASH BORER OUTBREAK IN THE SAINT PAUL AREA.

No.	Date	Revisions	App.



CITY OF MAPLEWOOD
 WAKEFIELD PARK IMPROVEMENTS
 CITY PROJ. # PR17-01
 TREE PLAN

SHEET NO.
 1 OF 1